



## PRODUCTS DATASHEET

---

FRM系列 Series(DC1000V)

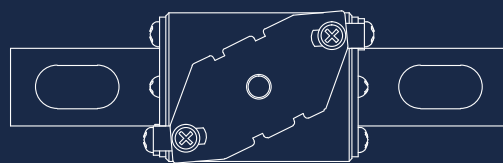
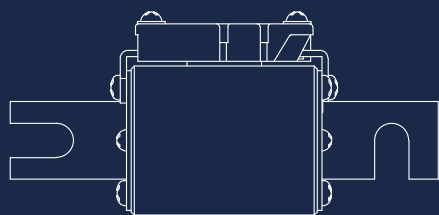
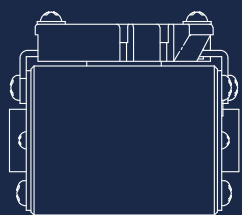
直流快速熔断器

Fast-Acting Fuses

---

产品规格书

Product Specification





### 1.规格型号 Specification

1.1 额定电压 Rated Voltage:DC1000V

1.2 功能等级 Utilization Category:aR

1.3分断能力 Breaking Capacity: For 61(61S) size I1=50KA  
For 62 size I1=100kA

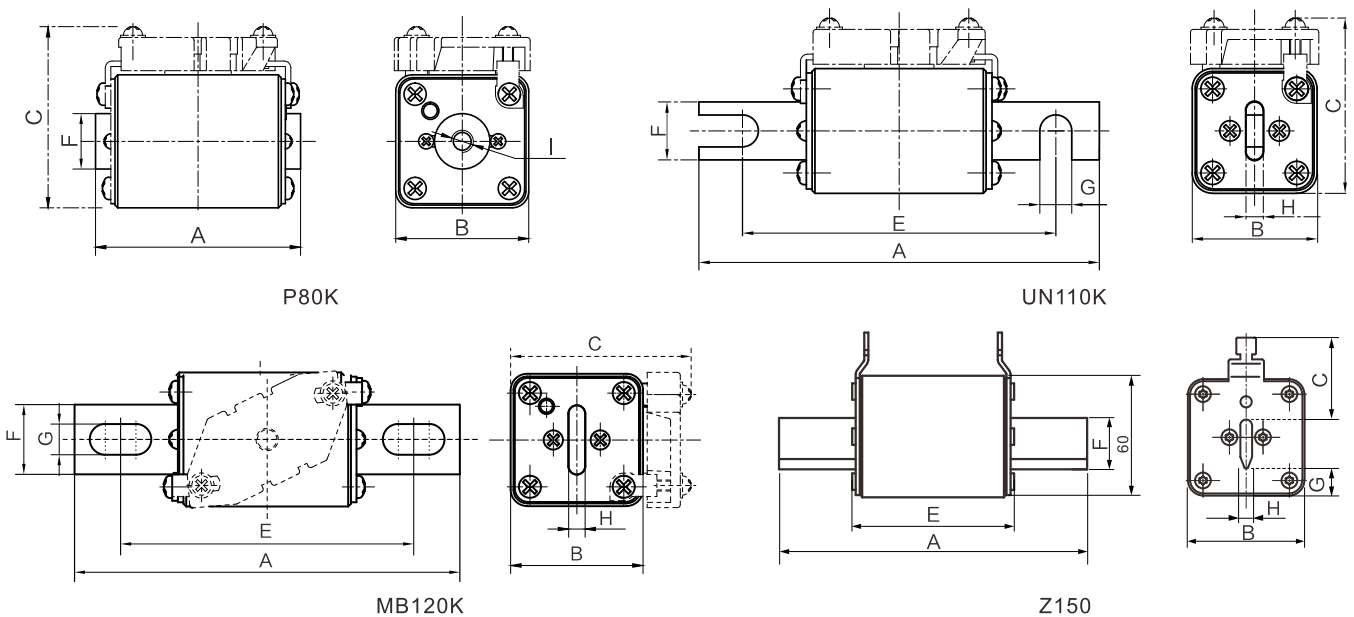
1.4 认证Approval:(61和62尺码) UL&CSA

### 2.符合标准及规范Standard: UL248-13

### 3.产品外形尺寸 Product Dimension

型号 Model	尺码 Size	安装方式 Installation	额定电压 Rated Voltage (V)	额定电流 Rated Current (A)	尺寸Dimension (mm)							
					A	B	C	E	F	G	H	I
FRM	61S	P80K	DC1000	50~400	81	43	61	—	17	—	—	M8x10
	61	P80K	DC1000	50~500	81	51	67	—	20	—	—	M8x10
	61S	UN110K	DC1000	50~400	134	43	61	108	20	8.5	6	—
	61	UN110K	DC1000	50~500	138	51	67	108	25	11	6	—
	61S	MB120K	DC1000	50~400	146	43	61	115	20	8.5	6	—
	61	MB120K	DC1000	50~500	146	51	67	115	25	11	6	—
FRM	62	P80K	DC1000	250~700	81	60	76	—	24	—	—	M10x12
		142			60	76	108	25	11	6	—	
		146			60	76	115	25	11	6	—	
		150			60	41	85(Max)	25	15	6	—	

\* 尾缀“W”代表不带微动开关基座 例:FRM61-UN110K-W  
尾缀“T”代表视觉弹片指示 例:FRM61-UN110K-T

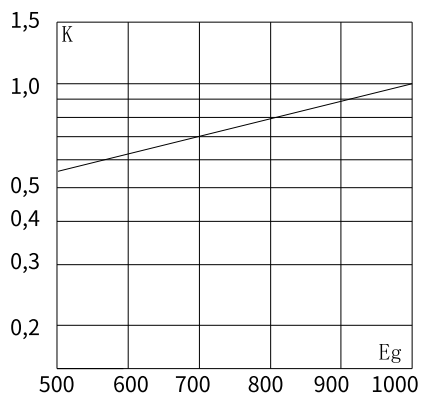


### 4. 产品技术参数 Technical Data

#### 4.1 弧前I<sup>2</sup>t、熔断I<sup>2</sup>t、额定功率 Pre-arcing I<sup>2</sup>t、Melting I<sup>2</sup>t、Rated Power

型号 Model	尺寸 Size	安装方式 Installation	电流(A) Rated Current (A)	弧前I <sup>2</sup> t Pre-arcing I <sup>2</sup> t	熔断I <sup>2</sup> t Melting I <sup>2</sup> t	额定功率(W) Rated Power(W)	曲线图 Curves
FRM	61 (61S)	P80K UN110K MB120K	50	140	1050	30	图1 图2 Figure 1 Figure 2
			63	220	1700	35	
			80	420	3300	40	
			100	760	5900	50	
			125	1500	11400	60	
			160	2600	20800	70	
			200	5200	40000	80	
			250	9200	50000	90	
			315	20000	110000	105	
			350	31500	157500	110	
			400	44000	199000	120	
	61	450	65000	280000	130		
	500	133000	532000	135			
	FRM	62	P80K UN110K MB120K Z150	250	9200	50000	
315				20000	110000	102	
350				31500	157500	108	
400				44000	199000	118	
450				65000	280000	130	
500				133000	532000	135	
550				210000	950000	142	
630				290000	1450000	150	
700				378000	1800000	160	

#### 4.2 熔断I<sup>2</sup>t修正系数K Melting I<sup>2</sup>t Correction Factor K



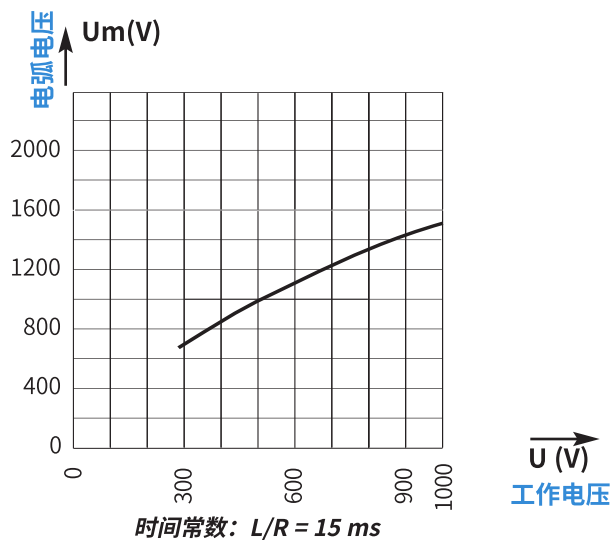
计算方法: I<sup>2</sup>t(修正)=I<sup>2</sup>t(额定) × K

Calculation Method:

I<sup>2</sup>t(correction) = I<sup>2</sup>t (rated) × K

注: Eg为工作电压  
Note: Eg is the working voltage

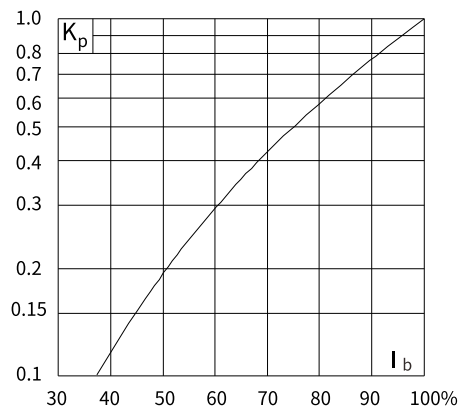
### 4.3 电弧电压峰值 Peak Value of Arc Voltage



### 4.4 功耗修正系数Kp Power consumption correction factor Kp

额定功耗已在4.1给出, 低于额定电流的功耗可按下图计算

The rated power consumption is given in 4.1, and the power consumption below the rated current can be calculated as shown below.



计算方法:  $W(\text{修正}) = W(\text{额定}) \times Kp$

Calculation Method:

$W(\text{correction}) = W(\text{rated}) \times Kp$

### 4.5 时间-电流曲线 Time-current characteristics curves

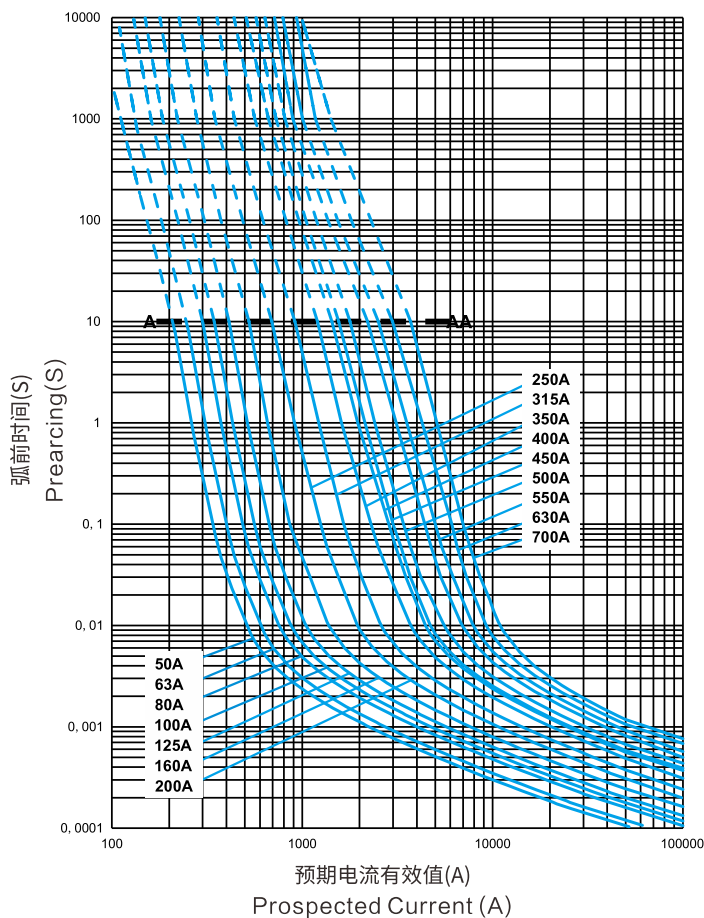


图 Figure 1

### 4.6 截断电流特性 Cut-off current characteristics

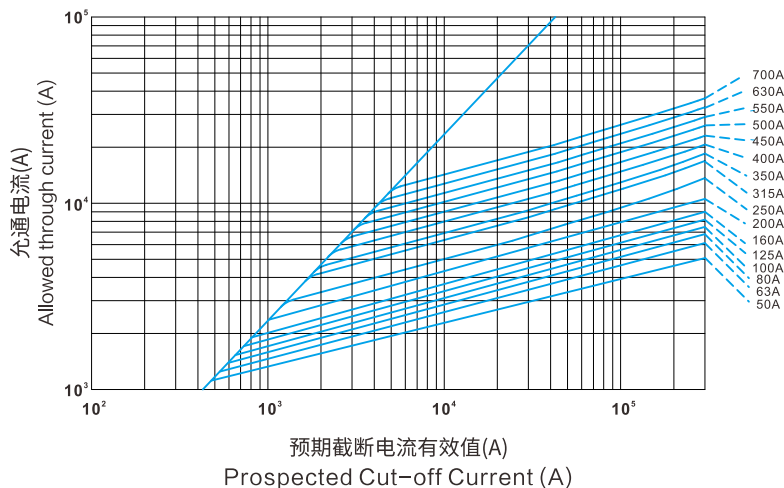


图 Figure 2

样本所述的产品资料以实物为准，若有变更本公司恕不另行通知，欢迎致电咨询。

The product information stated in the sample shall be subject to the material object.  
If there is any change without prior notice, please call us for consultation.

**FRZ<sup>®</sup> 弗而兹电气**

地址：浙江省乐清市北白象镇东大街512号  
Address: 512 Dong Dajie, Beibaixiang Town, Yueqing  
City, Zhejiang Province

电话(Tel): 0577-6198 6868 传真(Fax): 0577-6198 6869 网站(Web): <http://www.frsidq.com>

